

Range of flame proof roof mounted fans, classified Ex II2G Exd IIB(H2) and specially designed for the ventilation / extraction of potentially hazardous and explosive gases.

Working temperature up to +60°C.
Direct drive backward curved centrifugal impeller, manufactured from galvanised sheet steel and aluminium hub.
Base manufactured from galvanised sheet steel and brass inlet ring.
Cowl manufactured in galvanised sheet steel.

Bird proof guard in accordance with EN ISO 13857 Standard.

Motors

On request, explosion proof versions in accordance to ATEX Directive.

- ATEX Flameproof - Gas

In standard ATEX version flameproof motors are without thermal protection. If used with frequency inverter, flameproof motors with a PTC-type thermal protection must be specified at order.

⊗ II2G EExd IICT4.

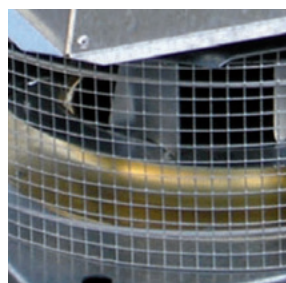
Available in 4, 6 or 8 poles, depending on versions.

Three phase motor 230/400V-50Hz, IP55, class F.

Motor fitted with PTC thermal protection to connect to a frequency inverter.



Easy to install
Supports easing the installation on the roof.



Bird-proof guard.



Backward curved centrifugal impellers
To prevent accumulation of dirt.

Specific applications



TECHNICAL CHARACTERISTICS

Before installation check that the product electrical characteristics listed on the data plate label (voltage, power, frequency, etc.) match those of the intended electrical supply.

Model	Speed (rpm)	Motor power (kW)	Nominal current at 400 V (A)	Maximum airflow (m ³ /h)	Sound pressure level at 1,5 m (dB(A))		Weight (kg)
					Inlet	Outlet	

4-Pole MOTOR

TCDH Exd 010-4	1500	0,25	1,2	1.120	58	62	22
TCDH Exd 020-4	1500	0,25	1,2	2.450	62	66	25
TCDH Exd 030-4	1500	0,37	1,5	3.300	67	71	32
TCDH Exd 040-4	1500	0,55	1,7	5.500	71	75	35
TCDH Exd 060-4	1500	0,75	2,2	7.000	74	78	57
TCDH Exd 080-4	1500	1,50	4	9.600	76	81	68
TCDH Exd 105-4	1500	2,20	5,2	12.800	79	84	90

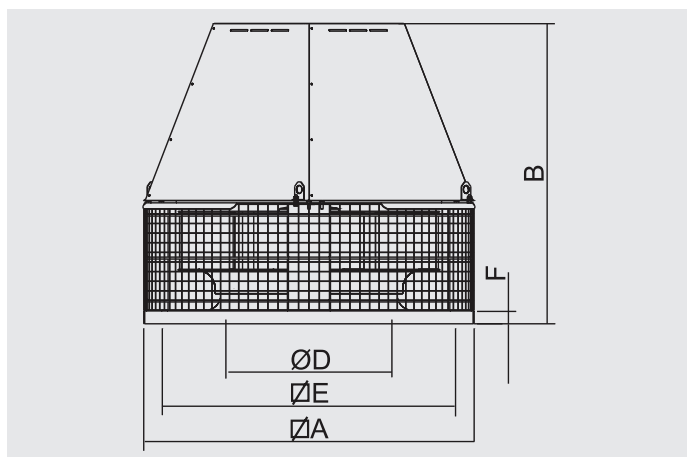
6-Pole MOTOR

TCDH Exd 020-6	1000	0,18	1	1.650	52	56	25
TCDH Exd 030-6	1000	0,18	1	2.200	57	61	32
TCDH Exd 040-6	1000	0,25	1,4	3.700	61	65	35
TCDH Exd 060-6	1000	0,25	1,4	4.700	64	68	57
TCDH Exd 080-6	1000	0,37	1,6	6.500	66	71	68
TCDH Exd 105-6	1000	0,75	2,4	8.700	68	73	90
TCDH Exd 110-6	1000	1,10	3,4	11.000	72	77	96
TCDH Exd 140-6	1000	2,20	5,4	16.000	75	81	110
TCDH Exd 195-6	1000	3,00	8,5	22.500	78	83	126
TCDH Exd 250-6	1000	5,50	14	25.500	81	86	150

8-Pole MOTOR

TCDH Exd 060-8	750	0,12	0,85	3.400	55	60	57
TCDH Exd 080-8	750	0,18	1,15	4.800	59	63	68
TCDH Exd 105-8	750	0,37	1,5	6.400	61	66	90
TCDH Exd 110-8	750	0,55	2,1	8.200	64	69	96
TCDH Exd 140-8	750	1,10	4,1	12.100	68	73	110
TCDH Exd 195-8	750	1,50	4,8	17.000	71	76	126
TCDH Exd 250-8	750	3,00	8,7	19.200	74	79	150

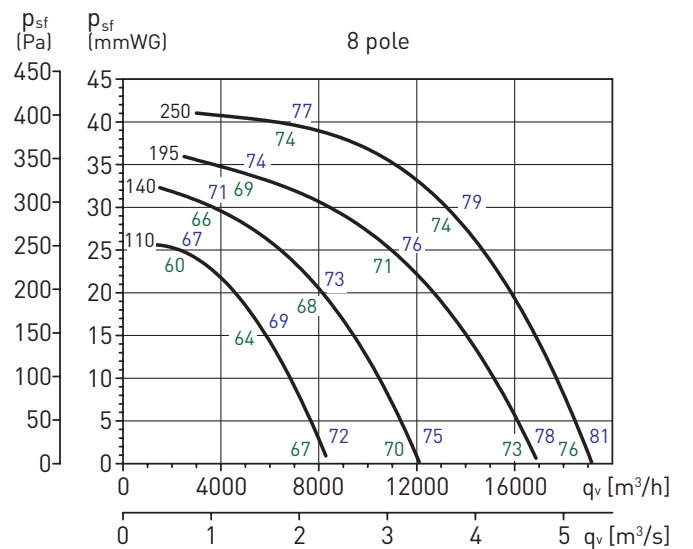
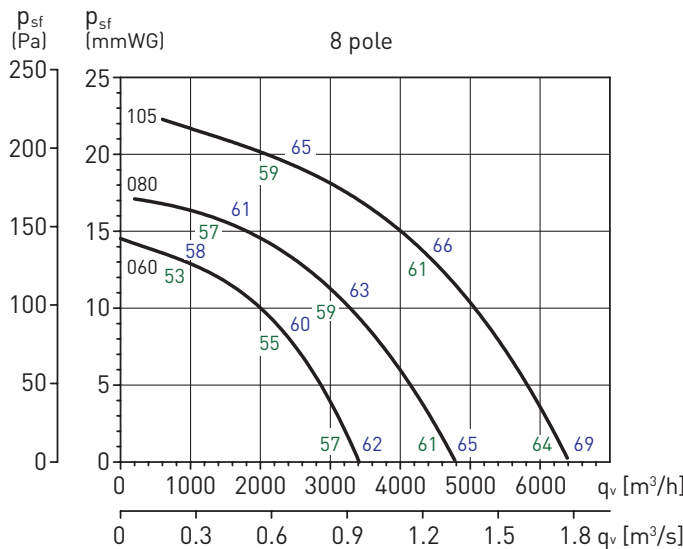
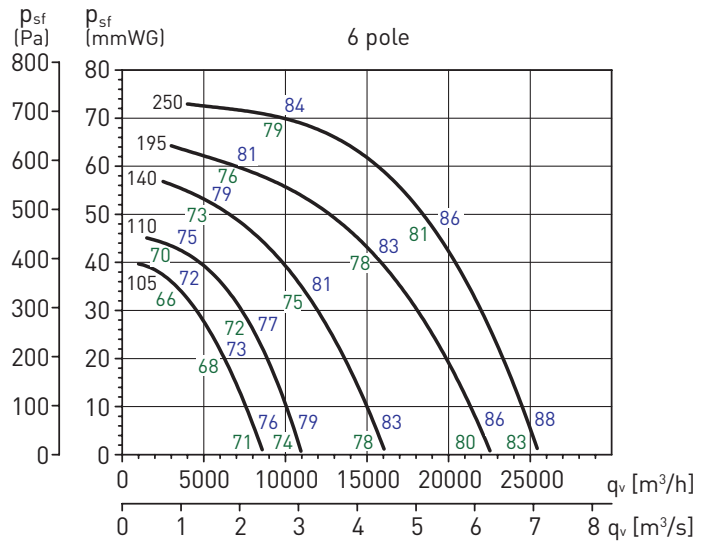
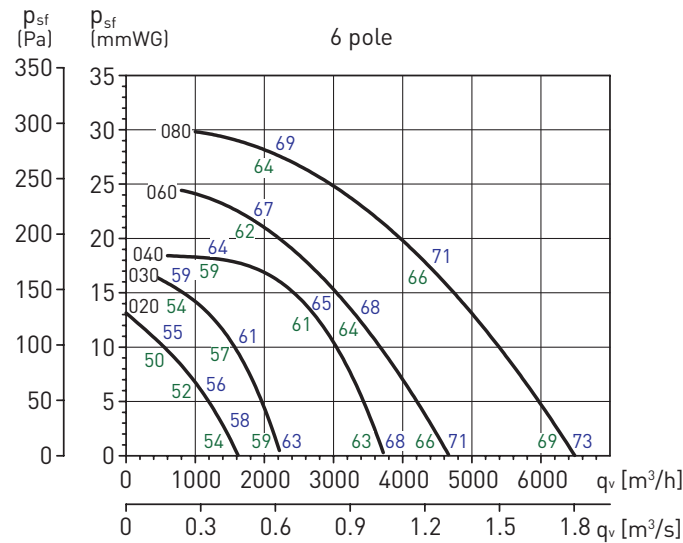
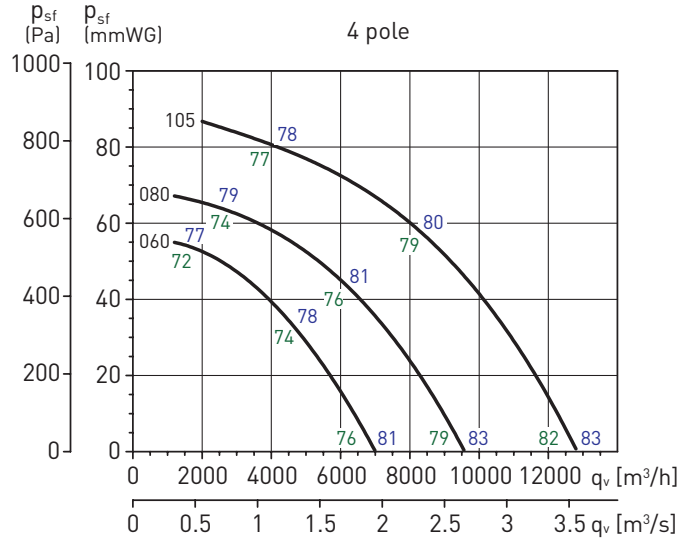
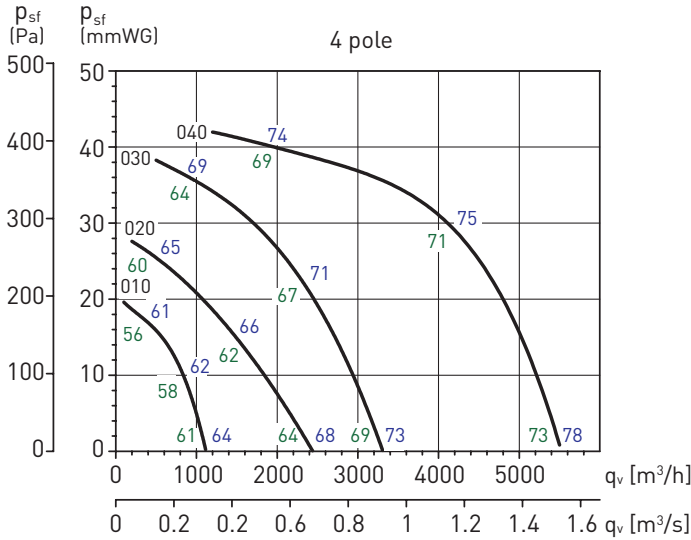
DIMENSIONS (mm)



Model	A	B	D	E	F
TCDH Exd 010	430	405	181	344	30
TCDH Exd 020	430	430	217	344	30
TCDH Exd 030	540	539	256	450	30
TCDH Exd 040	540	562	294	450	30
TCDH Exd 060	660	650	326	570	30
TCDH Exd 080	660	662	362	570	30
TCDH Exd 105	800	726	399	668	30
TCDH Exd 110	800	759	444	668	30
TCDH Exd 140	946	876	490	830	30
TCDH Exd 195	946	900	537	830	30
TCDH Exd 250	1030	940	581	830	40

PERFORMANCE CURVES

- q_v : Airflow in m^3/h and m^3/s .
- p_{sf} : Static pressure in mmWG and Pa.
- Dry air at 20°C and 760 mmHg.
- Performance data in accordance with ISO 5801 and AMCA 210-99 Standards.
- Sound pressure level in dB(A) at 1.5m hemispherical, in free field conditions, at the inlet (green values) and the outlet (blue values).



ACOUSTIC CHARACTERISTICS

Sound power spectrums in dB(A)

Model TCDH Exd 060-8		63	125	250	500	1000	2000	4000	8000
3000 m³/h	Inlet	49	59	60	61	61	61	60	57
	Outlet	52	60	64	68	67	67	65	62
2000 m³/h	Inlet	46	57	58	60	60	59	56	52
	Outlet	50	59	64	67	65	63	60	56
1000 m³/h	Inlet	47	55	58	58	58	55	52	46
	Outlet	50	57	61	65	64	62	58	53

Model TCDH Exd 080-8		63	125	250	500	1000	2000	4000	8000
4000 m³/h	Inlet	53	62	64	65	65	65	64	61
	Outlet	56	63	68	71	71	70	68	65
3000 m³/h	Inlet	50	60	62	63	64	62	60	55
	Outlet	54	62	67	70	69	67	64	60
1800 m³/h	Inlet	51	58	62	62	61	59	55	50
	Outlet	53	61	65	68	68	65	61	56

Model TCDH Exd 105-8		63	125	250	500	1000	2000	4000	8000
55000 m³/h	Inlet	53	62	69	68	67	67	66	63
	Outlet	56	66	71	75	74	73	71	68
4000 m³/h	Inlet	51	58	66	66	66	65	63	58
	Outlet	54	65	70	73	72	70	67	63
2000 m³/h	Inlet	50	57	65	65	64	62	58	53
	Outlet	54	64	68	71	71	68	65	60

Model TCDH Exd 110-8		63	125	250	500	1000	2000	4000	8000
7500 m³/h	Inlet	59	68	70	70	71	71	70	66
	Outlet	62	70	74	78	77	76	74	71
5000 m³/h	Inlet	55	66	68	69	69	68	66	61
	Outlet	60	68	73	76	75	73	70	66
3000 m³/h	Inlet	57	64	68	68	67	65	61	56
	Outlet	59	67	71	74	74	71	67	62

Model TCDH Exd 140-8		63	125	250	500	1000	2000	4000	8000
15000 m³/h	Inlet	62	71	73	74	74	74	73	70
	Outlet	65	73	78	81	81	80	78	75
8000 m³/h	Inlet	59	69	71	73	73	72	69	65
	Outlet	64	72	77	80	79	77	74	70
4000 m³/h	Inlet	60	67	71	71	71	68	65	59
	Outlet	63	70	74	78	78	75	71	66

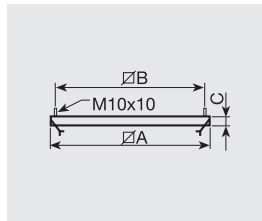
Model TCDH Exd 195-8		63	125	250	500	1000	2000	4000	8000
15000 m³/h	Inlet	65	74	76	76	77	77	76	73
	Outlet	68	76	81	84	84	83	81	78
11000 m³/h	Inlet	62	72	74	75	76	74	72	67
	Outlet	66	75	80	83	82	80	77	73
6000 m³/h	Inlet	63	70	74	74	73	71	68	62
	Outlet	66	73	77	81	80	77	73	69

Model TCDH Exd 250-8		63	125	250	500	1000	2000	4000	8000
19000 m³/h	Inlet	65	74	82	80	79	79	78	75
	Outlet	69	79	84	87	87	86	84	81
14000 m³/h	Inlet	63	70	79	78	79	77	75	70
	Outlet	67	77	82	86	85	83	80	76
6000 m³/h	Inlet	63	70	79	78	79	77	75	70
	Outlet	66	76	80	83	83	81	77	72

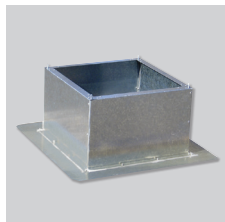
MOUNTING ACCESSORIES



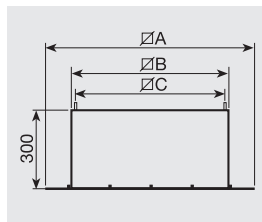
AJMS
Sealing frame
For mounting a roof fan on an up stand or base.



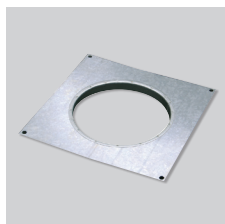
Model	A	B	C
AJMS-1	368	344	30
AJMS-2	478	450	30
AJMS-3	598	570	40
AJMS-4	698	668	40
AJMS-5	866	830	40



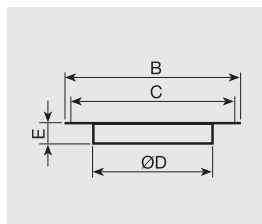
ACH
Flat roof up stand
For mounting a roof fan on a flat roof without up stand.



Model	A	B	C
ACH-1-300	428	368	344
ACH-2-300	538	478	450
ACH-3-300	658	598	570
ACH-4-300	758	698	668
ACH-5-300	926	866	830



AJPA
Accessory adapter plate
To connect the roof fan to circular ducting.



Model	B	C	D	E
AJPA-1 D250	368	344	250	55
AJPA-2 D315	478	450	315	55
AJPA-3 D450	598	570	450	68
AJPA-4 D560	698	668	560	68
AJPA-5 D710	866	830	710	85

Fan model	010/020	030/040	060/080	105/110	140/195/250
Accessory size	1	2	3	4	5