

Acoustic cabinet fans manufactured from heavy gauge galvanised steel sheet and internally lined with 25 mm thickness of fireproof acoustic insulation (M0). All models incorporate single phase direct-drive forward curved centrifugal fan. All cabinets are supplied with a removable cover closing hermetically and can be installed outdoors as standard. Fitted with single phase 3-speed motors.

Motors

All the motors are IP44, Class B, with ball bearings and thermal protection.

Electrical supply:

Single phase 230V-50/60Hz.

Working temperature from -20°C to +40°C.

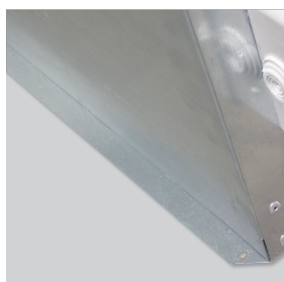
On request

Models manufactured with 50mm thickness of fireproof acoustic fiberglass insulation (M0).



Low noise level

Acoustic insulation of 25mm thickness fireproof fibreglass (M0) (on request, of 50mm) with a high resistance coating reducing the noise level significantly.



Easy to install

Mounting feet to ease installation in any position.



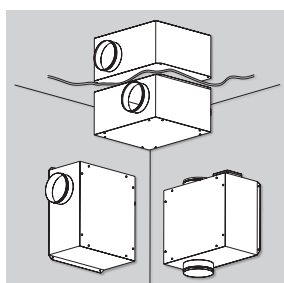
Cabinet air tightness

All models incorporate inlet and discharge circular duct connection flanges with integrated rubber air seal.



IP55 external terminal box

To ease installation and maintenance and connection to external controls.



Installation at any position

To be mounted in vertical, horizontal or inverted position.

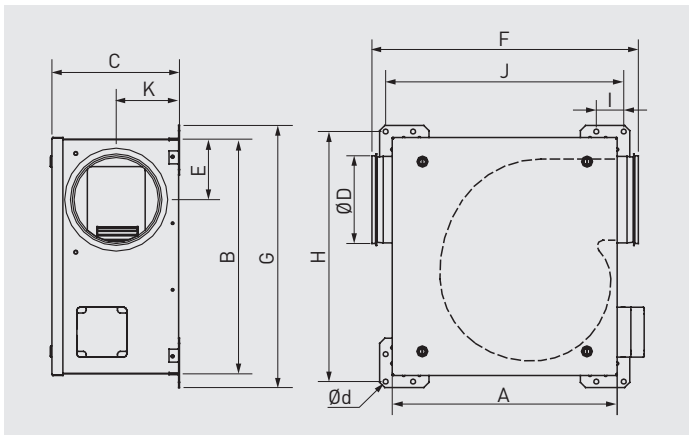
TECHNICAL CHARACTERISTICS

Before installation check that the product electrical characteristics listed on the data plate label (voltage, power, frequency, etc.) match those of the intended electrical supply.

Model	Speed (r.p.m.)	Maximum absorbed power (W)	Maximum absorbed current (A)	Maximum airflow (m³/h)	Sound pressure level* (dB(A))			Min-Max air temperature (°C)	Weight (kg)	3-speed switch	Regulador de tensión opcional	Wiring diagram (nº)	
					Inlet	Outlet	Radiated						
CAB-PLUS 125	HS	910	57	0,25	280	32	41	29	-20/+40	11,6	COM-3 INTER 4P	RMB-1,5 REB-1N	52
	MS	723	31	0,19	220	31	41	24					
	LS	585	24	0,18	180	34	43	19					
CAB-PLUS 160	HS	1317	97	0,42	600	42	53	38	-20/+40	15,9	COM-3 INTER 4P	RMB-1,5 REB-1N	52
	MS	1010	53	0,36	440	37	49	32					
	LS	714	35	0,31	310	38	49	25					
CAB-PLUS 250 N	HS	1317	133	0,59	750	50	61	43	-20/+40	22,5	COM-3 INTER 4P	RMB-1,5 REB-1N	52
	MS	880	67	0,44	500	45	56	34					
	LS	639	47	0,35	370	45	54	27					
CAB-PLUS 315	HS	1200	326	1,46	1.280	53	64	45	-20/+40	26,8	COM-3 INTER 4P	RMB-3,5 REB-2,5N	52
	MS	962	251	1,39	1.060	51	62	40					
	LS	692	171	1,19	760	50	60	33					

* Sound pressure level measured at 1,5 m, in free field conditions

DIMENSIONS (mm)



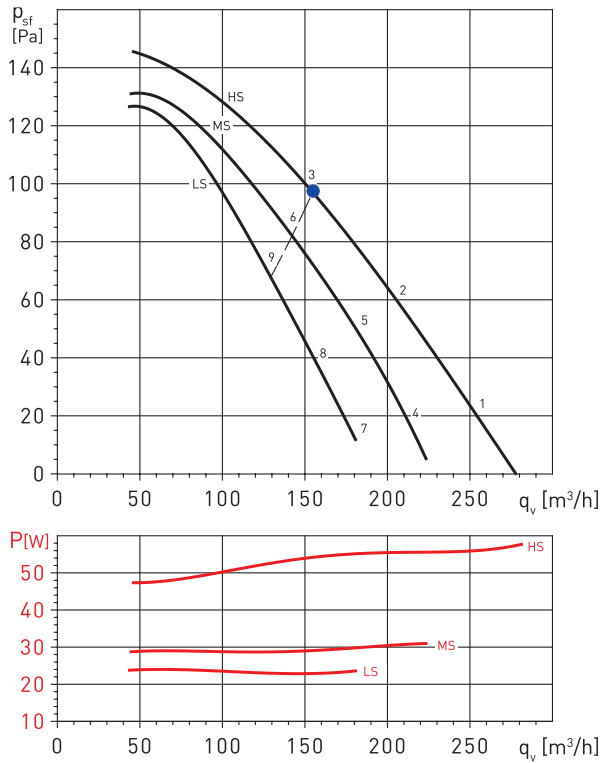
Model	A	B	C	D	E	F	G	H	I	J	K	d
CAB-PLUS 125	330	345	255	125	96	411	395	373	50	358	126	9
CAB-PLUS 160	406	468	277	160	123	486	518	496	50	434	134	9
CAB-PLUS 250N	494	494	382	250	160	607	540	518	50	516	185	9
CAB-PLUS 315	537	544	393	315	190	638	594	572	50	565	176	9

PERFORMANCE CURVES

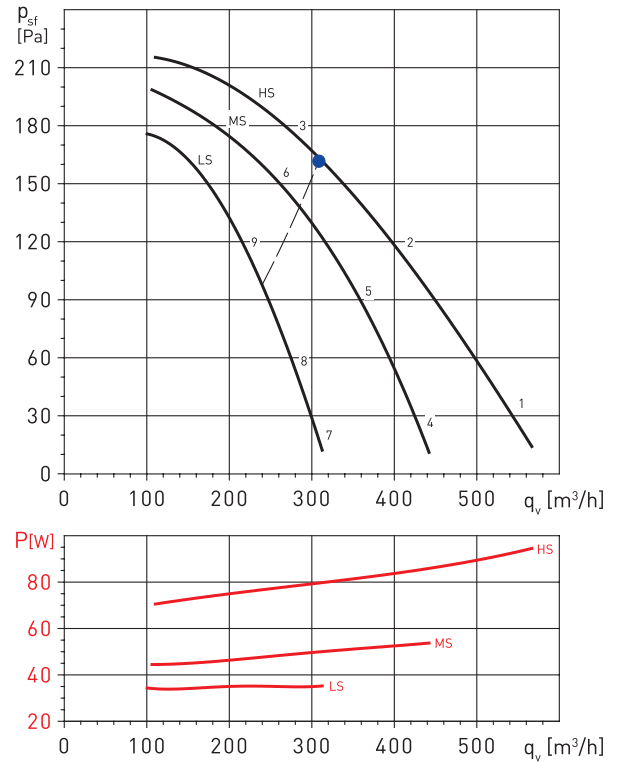
- q_v : Airflow in m^3/h .
- p_{sf} : Static pressure in Pa.
- Dry air at 20°C and 760 mmHg.
- Performance data in accordance with ISO 5801 and AMCA 210-99 Standards.

HS : High speed
MS: Medium speed
LS: Low speed

CAB-PLUS 125



CAB-PLUS 160



Working point	63	125	250	500	1000	2000	4000	8000	LwA	
1	Inlet	31	41	39	38	41	38	27	20	47
	Outlet	27	42	43	46	52	49	45	41	56
	Break-Out	31	38	35	34	37	34	21	17	43
2	Inlet	29	39	39	38	39	35	27	20	46
	Outlet	25	41	42	46	52	49	45	39	56
	Break-Out	29	36	35	34	35	31	21	17	42
3	Inlet	33	43	42	40	40	38	31	24	49
	Outlet	27	44	45	48	53	50	46	39	57
	Break-Out	33	40	38	36	36	34	25	21	45
4	Inlet	26	36	34	33	36	33	22	15	42
	Outlet	22	37	38	41	47	44	40	36	51
	Break-Out	26	33	30	29	32	29	16	12	38
5	Inlet	27	37	37	36	37	33	25	18	44
	Outlet	23	39	40	44	50	47	43	37	54
	Break-Out	27	34	33	32	33	29	19	15	40
6	Inlet	32	42	41	39	39	37	30	23	47
	Outlet	26	43	44	47	52	49	45	38	56
	Break-Out	32	39	37	35	35	33	24	20	44
7	Inlet	21	31	29	28	31	28	17	10	37
	Outlet	18	33	34	37	43	40	36	32	46
	Break-Out	21	28	25	24	27	24	11	7	34
8	Inlet	25	35	35	34	35	31	23	16	41
	Outlet	21	37	38	42	48	45	41	35	51
	Break-Out	25	32	31	30	31	27	17	13	38
9	Inlet	29	39	38	36	36	34	27	20	45
	Outlet	23	40	41	44	49	46	42	35	53
	Break-Out	29	36	34	32	32	30	21	17	41

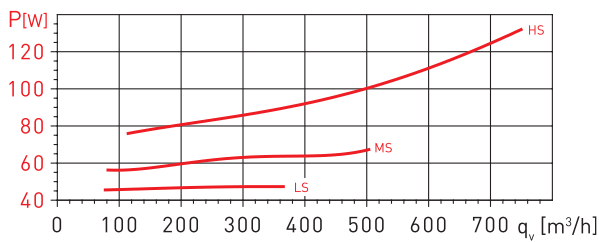
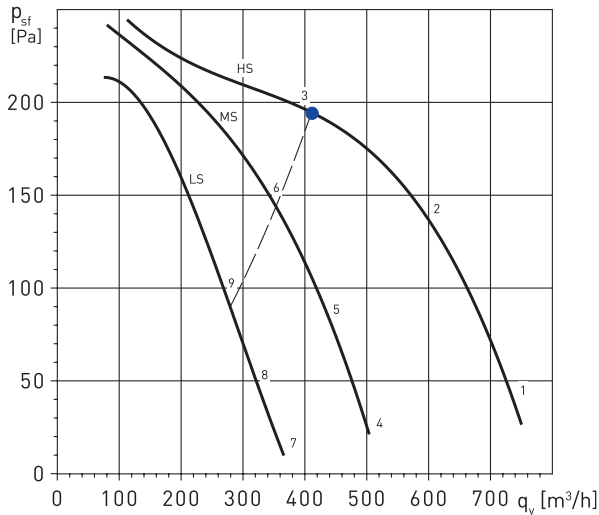
Working point	63	125	250	500	1000	2000	4000	8000	LwA	
1	Inlet	42	50	51	50	47	46	40	34	56
	Outlet	42	53	54	62	64	60	58	51	68
	Break-Out	42	48	46	44	44	43	34	27	53
2	Inlet	35	46	44	44	43	41	36	29	51
	Outlet	35	47	46	57	59	56	53	45	63
	Break-Out	35	44	39	38	40	38	30	22	48
3	Inlet	39	48	45	45	43	42	37	30	52
	Outlet	37	49	48	56	60	57	53	45	63
	Break-Out	39	46	40	39	40	39	31	23	49
4	Inlet	36	44	45	44	41	40	34	28	50
	Outlet	36	47	48	56	58	54	52	45	62
	Break-Out	36	42	40	38	38	37	28	21	47
5	Inlet	33	44	42	42	41	39	34	27	50
	Outlet	33	45	44	55	57	54	51	43	61
	Break-Out	33	42	37	36	38	36	28	20	46
6	Inlet	37	46	43	43	41	40	35	28	51
	Outlet	35	47	46	54	58	55	51	43	62
	Break-Out	37	44	38	37	38	37	29	21	48
7	Inlet	28	36	37	36	33	32	26	20	43
	Outlet	28	39	40	48	50	46	44	37	54
	Break-Out	28	34	32	30	30	29	20	13	39
8	Inlet	28	39	37	37	36	34	29	22	44
	Outlet	28	40	39	50	52	49	46	38	56
	Break-Out	28	37	32	31	33	31	23	15	41
9	Inlet	34	43	40	40	38	37	32	25	48
	Outlet	32	44	43	51	55	52	48	40	59
	Break-Out	34	41	35	34	35	34	26	18	45

PERFORMANCE CURVES

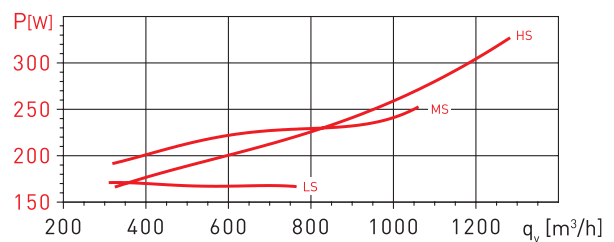
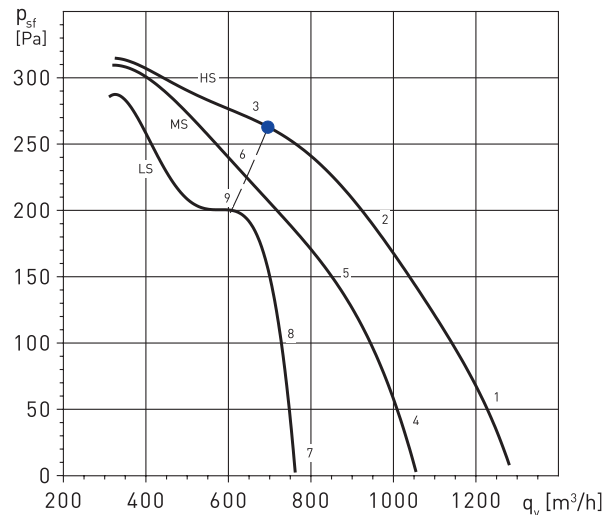
- q_v : Airflow in m^3/h .
- p_{sf} : Static pressure in Pa.
- Dry air at 20°C and 760 mmHg.
- Performance data in accordance with ISO 5801 and AMCA 210-99 Standards.

HS : High speed
MS: Medium speed
LS: Low speed

CAB-PLUS 250 N



CAB-PLUS 315



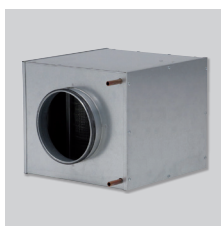
Working point	63	125	250	500	1000	2000	4000	8000	LwA	
1	Inlet	50	56	57	56	52	58	55	46	64
	Outlet	49	59	61	67	72	66	64	61	75
	Break-Out	50	43	51	49	49	49	46	38	57
2	Inlet	45	50	53	54	49	52	50	40	60
	Outlet	42	52	55	63	67	62	59	55	70
	Break-Out	45	37	47	47	46	43	41	32	54
3	Inlet	48	52	52	52	48	51	48	39	59
	Outlet	44	54	55	62	65	60	57	52	69
	Break-Out	48	39	46	45	45	42	39	31	53
4	Inlet	41	47	48	47	43	49	46	37	55
	Outlet	41	51	53	59	64	58	56	53	67
	Break-Out	41	34	42	40	40	40	37	29	49
5	Inlet	38	43	46	47	42	45	43	33	53
	Outlet	35	45	48	56	60	55	52	48	64
	Break-Out	38	30	40	40	39	36	34	25	47
6	Inlet	45	49	49	49	45	48	45	36	56
	Outlet	41	51	52	59	62	57	54	49	66
	Break-Out	45	36	43	42	42	39	36	28	50
7	Inlet	34	40	41	40	36	42	39	30	49
	Outlet	34	44	46	52	57	51	49	46	60
	Break-Out	34	27	35	33	33	33	30	22	42
8	Inlet	34	39	42	43	38	41	39	29	49
	Outlet	31	41	44	52	56	51	48	44	59
	Break-Out	34	26	36	36	35	32	30	21	42
9	Inlet	41	45	45	45	41	44	41	32	52
	Outlet	37	47	48	55	58	53	50	45	61
	Break-Out	41	32	39	38	38	35	32	24	46

Working point	63	125	250	500	1000	2000	4000	8000	LwA	
1	Inlet	50	58	63	59	58	61	58	53	68
	Outlet	47	59	63	71	75	71	70	65	78
	Break-Out	49	51	53	51	52	51	47	40	59
2	Inlet	49	56	61	56	57	59	55	50	66
	Outlet	45	56	61	68	73	69	68	62	77
	Break-Out	48	49	51	48	51	49	44	37	58
3	Inlet	50	55	59	54	56	58	55	50	64
	Outlet	44	55	59	66	71	67	66	60	74
	Break-Out	49	48	49	46	50	48	44	37	56
4	Inlet	45	53	58	54	53	56	53	48	63
	Outlet	42	54	58	66	70	66	65	60	74
	Break-Out	44	46	48	46	47	46	42	35	55
5	Inlet	46	53	58	53	54	56	52	47	63
	Outlet	42	53	58	65	70	66	65	59	73
	Break-Out	45	46	48	45	48	46	41	34	54
6	Inlet	49	54	58	53	55	57	54	49	63
	Outlet	43	54	58	65	70	66	65	59	73
	Break-Out	48	47	48	45	49	47	43	36	55
7	Inlet	38	46	51	47	46	49	46	41	56
	Outlet	35	47	51	59	63	59	58	53	66
	Break-Out	37	39	41	39	40	39	35	28	47
8	Inlet	43	50	55	50	51	53	49	44	59
	Outlet	39	50	55	62	67	63	62	56	70
	Break-Out	42	43	45	42	45	43	38	31	51
9	Inlet	47	52	56	51	53	55	52	47	62
	Outlet	41	52	56	63	68	64	63	57	71
	Break-Out	46	45	46	43	47	45	41	34	53

MOUNTING ACCESSORIES



MBE
Electrical heater.



MBW
Hot water coil.



MFL-G4
Filtration boxes.



SIL
Sound attenuators.



ACOPEL F400 N
Circular flexible connector.



APC
Discharge protection guards for direct connection to the inlet-outlet flange.

ELECTRICAL ACCESSORIES



REB-1N / REB-1NE
REB-2,5N /
REB-2,5NE
Electronic, single phase speed controllers.



RMB-1,5
Auto transformer single phase speed controllers.



ON/OFF IP55 SWITCH



PULSER
Single phase/three phase electric heater controller.



TG-K330
Duct temperature sensor.
TG-R530
Room temperature sensor.



TTC-2000
Three phase electric heater controller.



COM-2
Two speed switch Fan ON/OFF and speed selector I/II rotary switch.