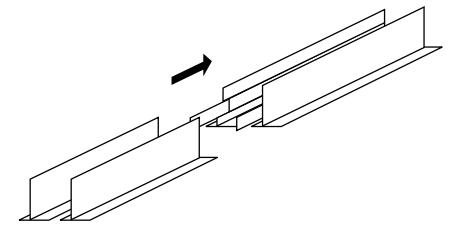
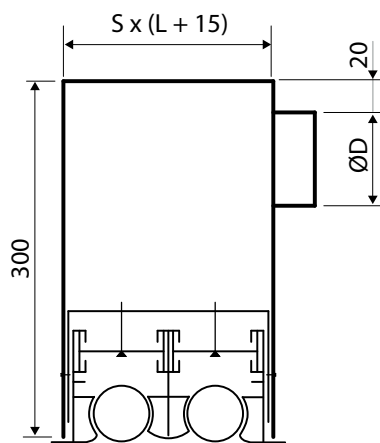
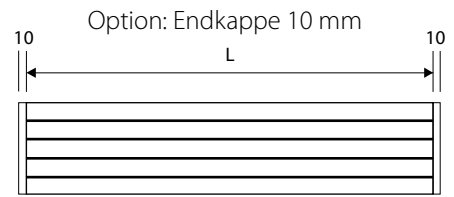
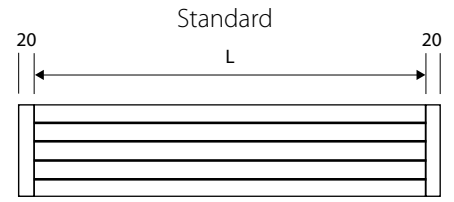
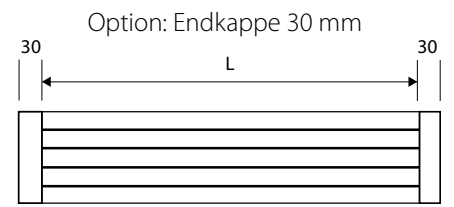
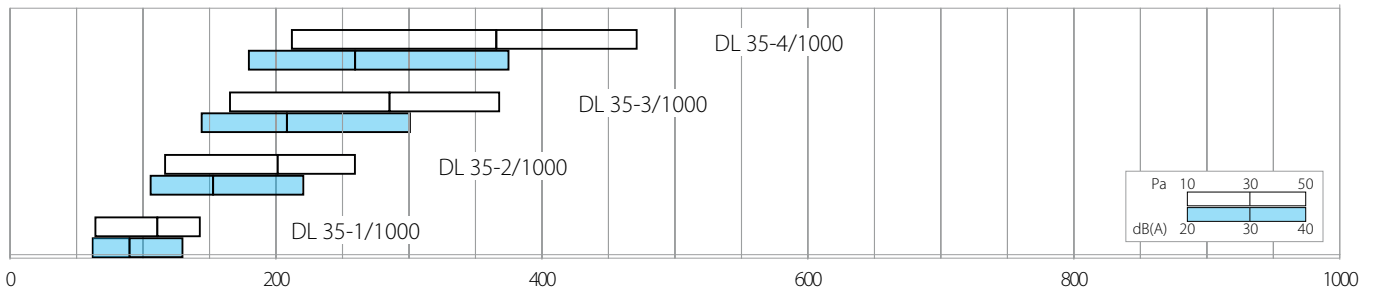


- Characteristics** Linear slot diffusers with airflow section rotating deflector medium-small airflow.
- Construction** Anodized extruded aluminium, deflector made of RAL 9005 black polypropylene.
- Utilization** For ceiling installation and for air intake and delivery. Installation height: 2,6–4,0 m
- Fixing** By inner mounting mobile bracket.
- Accessories** Galvanized steel connecting plenum with or without insulation (see page 34). Deflector RAL 9003.

N. slots	Lenght [mm]	Ø spigot N. spitos	A [mm]	B [mm]	S [mm]
1	800	98-1	39	56	43
	1000	98-1			
	1500	98-2			
	2000	98-2			
2	800	148-1	77	94	81
	1000	148-1			
	1500	148-2			
	2000	148-2			
3	800	198-1	115	132	119
	1000	198-1			
	1500	198-2			
	2000	198-2			
4	800	198-1	153	170	157
	1000	198-1			
	1500	198-2			
	2000	198-2			

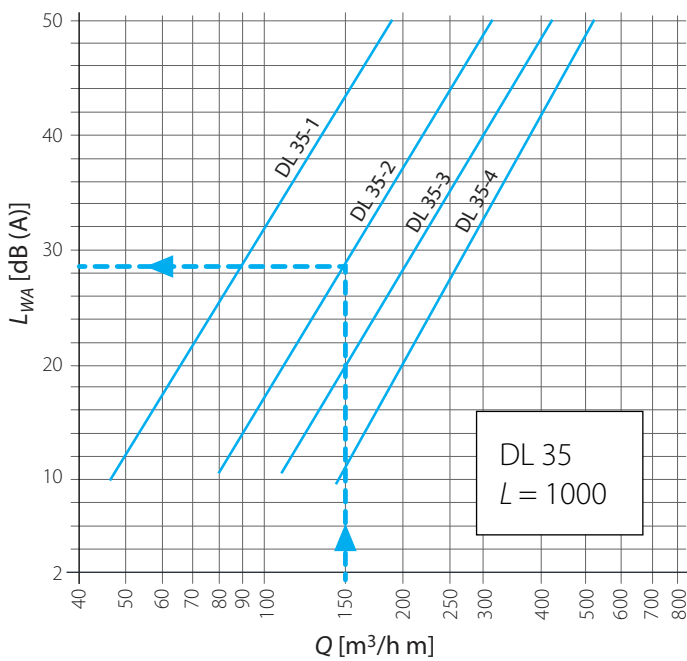


## Quick selection diagram

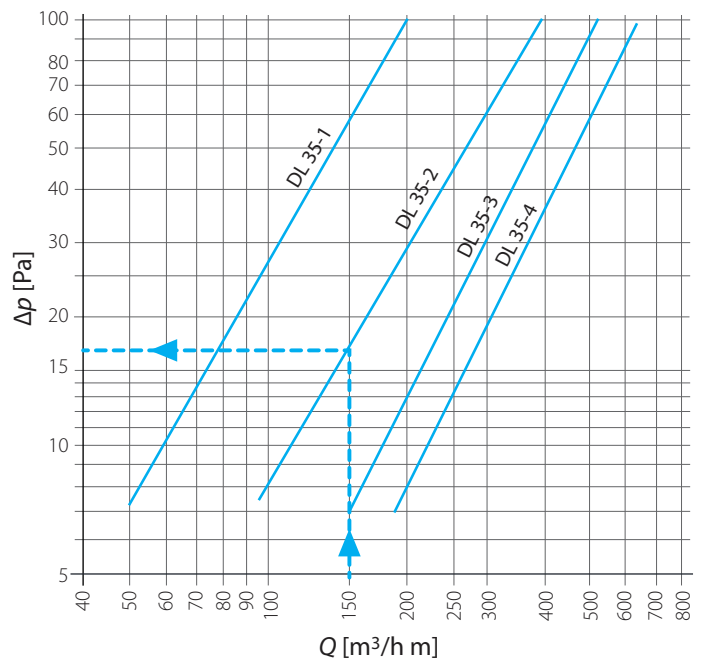


	$A_k$ [m <sup>2</sup> ]	$Q$ [m <sup>3</sup> /h]		$L_{wa}$ [dB(A)]		$X_{0,25}$ [m]		$Dp_t^*$ [Pa]	
		min	max	min	max	min	max	min	max
DL 35-1/1000	0,00620	60	140	-	42	3,3	7,7	10	50
DL 35-2/1000	0,01240	120	260	23	44	4,3	9,4	10	50
DL 35-3/1000	0,01860	170	370	24	46	4,8	10,4	10	50
DL 35-4/1000	0,02480	210	470	24	46	5,0	11,1	10	50

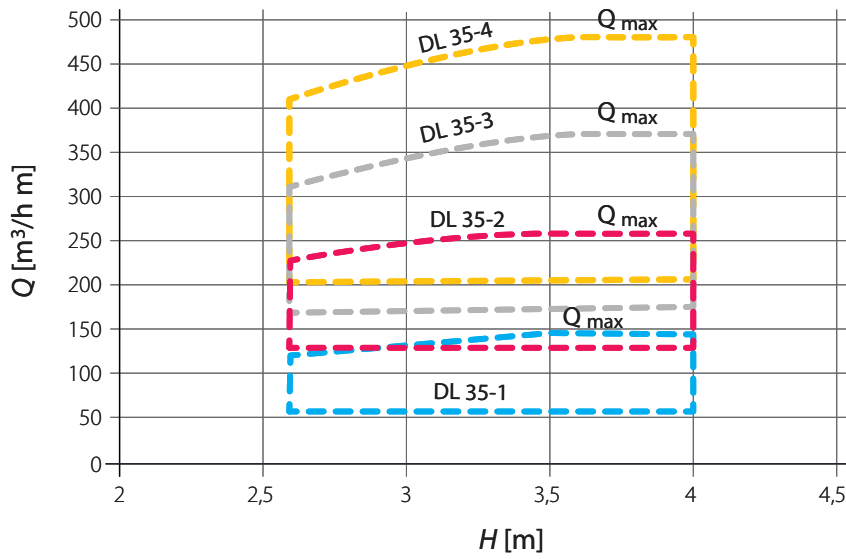
## Sound power level



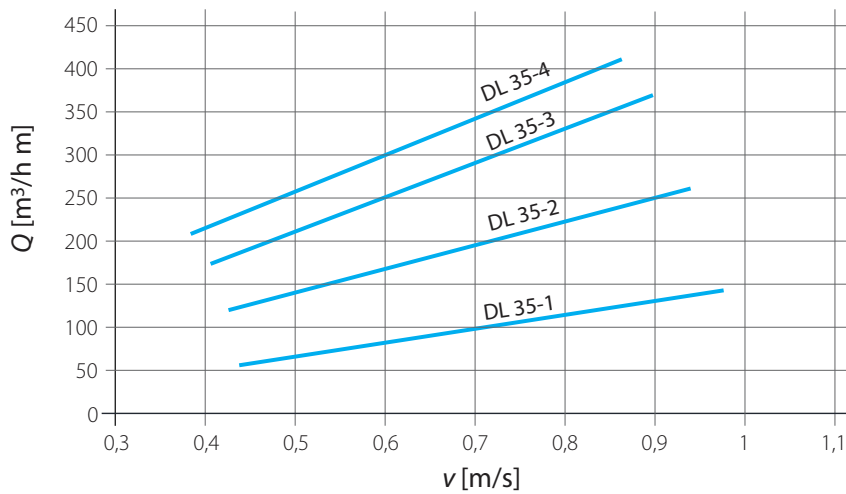
## Pressure drop



## Airflow per meter of distance



## Air speed at the mouth of the diffuser



### Ordering key

**DL 35 - B - 2 / 1500 / RAL**

