



Range of wall mounted in-line duct centrifugal fans, manufactured from high grade corrosion resistant pressed galvanised steel. All model include an enclosed type, single-phase external rotor motor with factory matched backward curved non-stalling impeller. All the impellers are manufactured from polyamide except model 315N which is made from galvanised sheet steel.

Motors

All motors are IP44, class F, with ball bearings and safety thermal overload protection.

Electrical supply:

Single phase 230V-50/60Hz.

All models are speed controllable.

On request

VENT-V-160 fitted with 48V-DC motor.

TECHNICAL CHARACTERISTICS

Before installation check that the product electrical characteristics listed on the data plate label (voltage, power, frequency, etc.) match those of the intended electrical supply.

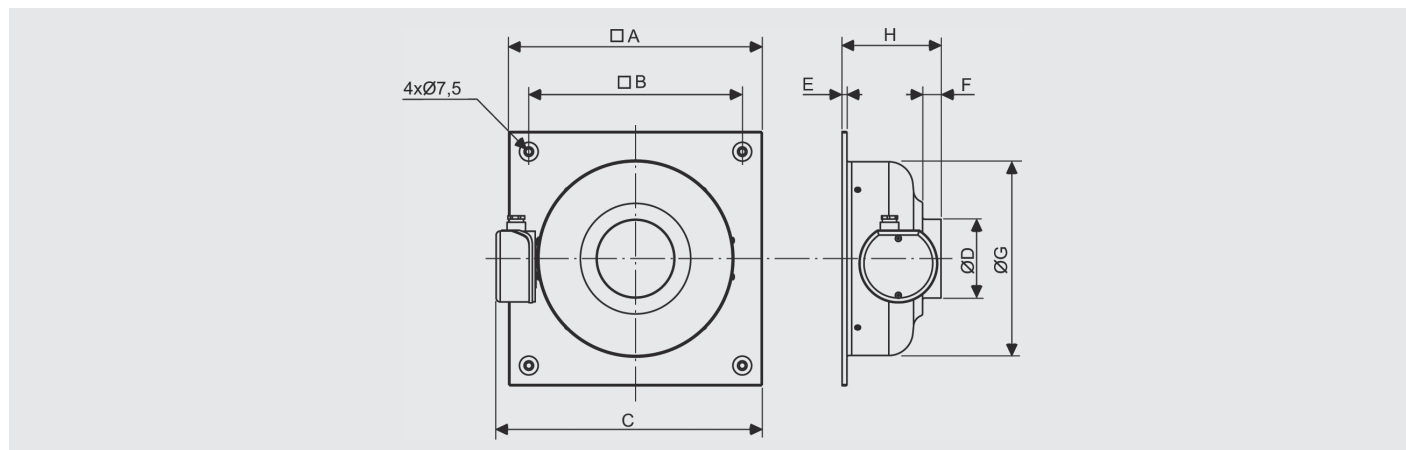
Model	Supply Voltage (V-50Hz)	Speed (rpm)	Maximum absorbed power (W)	Maximum absorbed current (A)	Maximum airflow (m ³ /h)	Sound pressure level* (dB(A))	Ambient temperature (°C)	Weight (kg)	Wiring diagram** (n°)
VENT/V-100 N	230	2580	57	0,26	310	50	-20°C/+60°C	3	19
VENT/V-125 N	230	2580	57	0,26	380	51	-20°C/+60°C	3	19
VENT/V-150 N	230	2480	95	0,40	780	53	-20°C/+60°C	5	19
VENT/V-160 N	230	2450	95	0,39	750	53	-20°C/+60°C	5	19
VENT/V-200 N	230	2690	145	0,60	960	54	-20°C/+60°C	5	19
VENT/V-250 N	230	2690	145	0,60	1000	56	-20°C/+60°C	6	19
VENT/V-315 N	230	2750	247	1,10	1320	59	-20°C/+60°C	8	19

* Sound pressure level measured at the fan inlet in dB(A), at 3m, in free field condition, at the maximum airflow

** See section of Wiring Diagrams.

DIMENSIONS (mm)

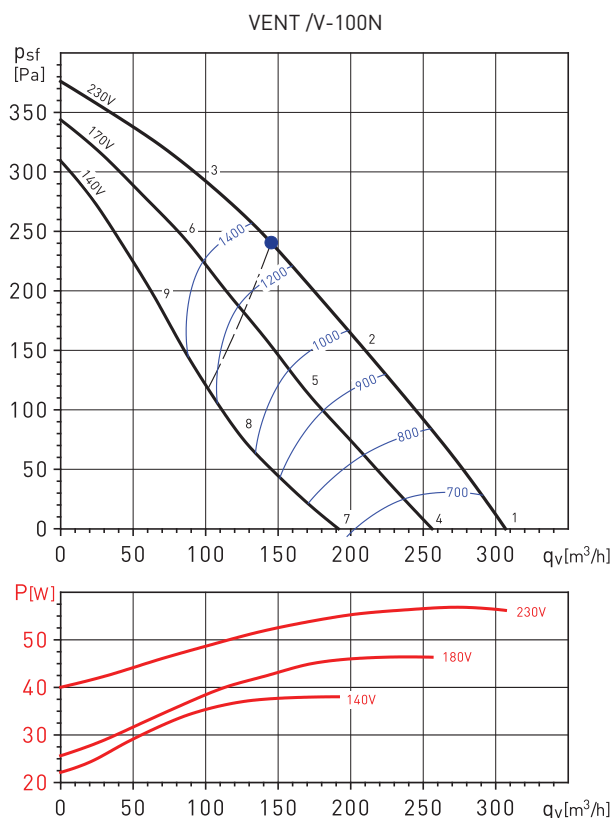
Mounting with the motor in horizontal position.



Model	A	B	C	D	E	F	G	H
VENT/V-100 N	315	265	331	97,5	6	23	240	123
VENT/V-125 N	315	265	331	122,5	6	27	240	127
VENT/V-150 N	400	350	418	147	6	28	330	130
VENT/V-160 N	400	350	418	157	6	28	330	130
VENT/V-200 N	400	350	418	198	6	27	330	143
VENT/V-250 N	400	350	418	248	6	27	330	132
VENT/V-315 N	450	400	477	312	6	25	398	147

PERFORMANCE CURVES - ACOUSTIC CHARACTERISTICS

- q_v : Airflow in m^3/h .
- p_{st} : Static pressure in Pa.
- Dry air at 20°C and 760 mmHg.
- Performance data in accordance with ISO 5801 and AMCA 210-99 Standards.
- Sound power level spectrums [LwA].
- SFP: Specific fan power in $W/m^3/s$ (blue curves).

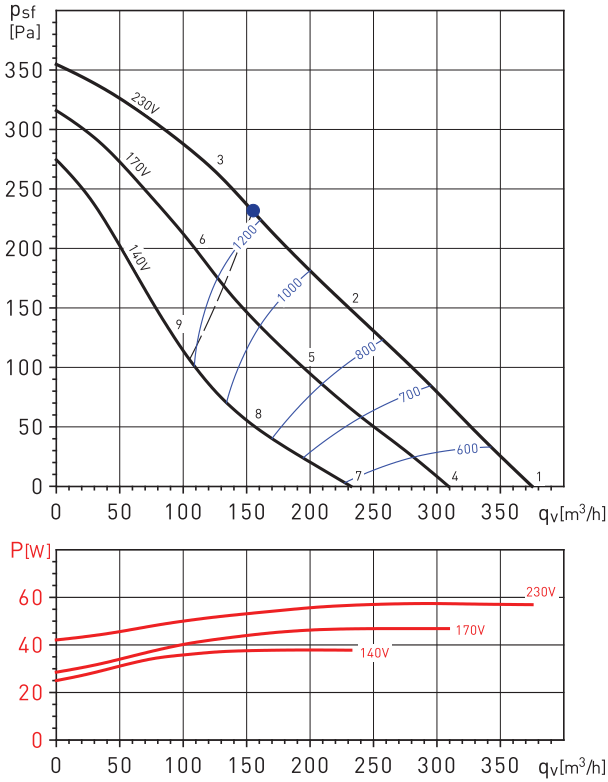


VENT/V-100N		63	125	250	500	1000	2000	4000	8000	LwA
1	INLET	37	46	58	62	68	64	60	46	71
	OUTLET	37	45	63	58	63	61	57	46	68
	BREAK-OUT	33	38	50	50	55	49	51	37	59
2	INLET	39	45	56	60	66	62	56	43	69
	OUTLET	38	44	61	56	61	59	54	43	66
	BREAK-OUT	35	37	48	48	53	47	47	34	56
3	INLET	37	43	53	58	65	60	53	42	67
	OUTLET	37	43	57	56	60	57	52	42	64
	BREAK-OUT	33	35	45	46	52	45	44	33	55
4	INLET	33	42	54	58	64	60	56	42	67
	OUTLET	33	41	59	54	59	57	53	42	64
	BREAK-OUT	29	34	46	46	51	45	47	33	55
5	INLET	35	41	52	56	62	58	52	39	65
	OUTLET	34	40	57	52	57	55	50	39	62
	BREAK-OUT	31	33	44	44	49	43	43	30	53
6	INLET	35	41	51	56	63	58	51	40	65
	OUTLET	35	41	55	54	58	55	50	40	62
	BREAK-OUT	31	33	43	44	50	43	42	31	53
7	INLET	27	36	48	52	58	54	50	36	61
	OUTLET	27	35	53	48	53	51	47	36	58
	BREAK-OUT	23	28	40	40	45	39	41	27	49
8	INLET	30	36	47	51	57	53	47	34	59
	OUTLET	29	35	52	47	52	50	45	34	57
	BREAK-OUT	26	28	39	39	44	38	38	25	47
9	INLET	32	38	48	53	60	55	48	37	62
	OUTLET	32	38	52	51	55	52	47	37	59
	BREAK-OUT	28	30	40	41	47	40	39	28	49

PERFORMANCE CURVES - ACOUSTIC CHARACTERISTICS

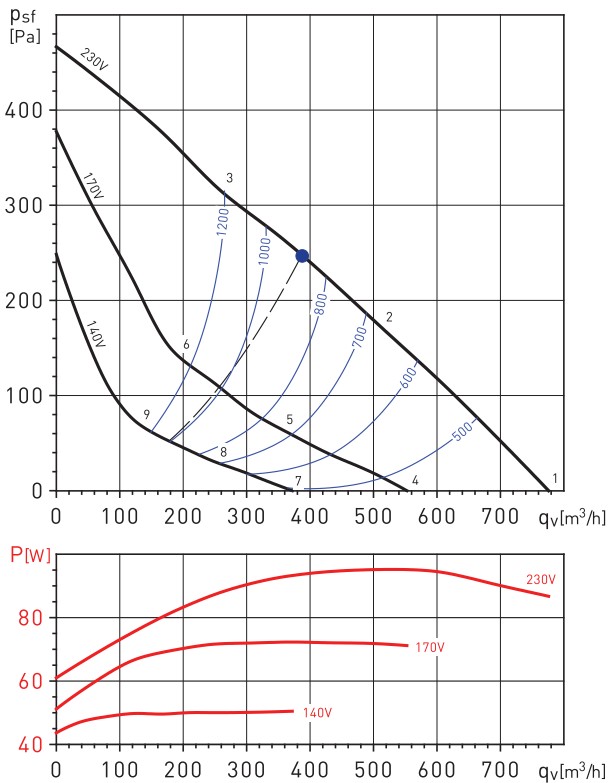
- q_v : Airflow in m^3/h .
- p_{sf} : Static pressure in Pa.
- Dry air at 20°C and 760 mmHg.
- Performance data in accordance with ISO 5801 and AMCA 210-99 Standards.
- Sound power level spectrums (LwA).
- SFP: Specific fan power in $W/m^3/s$ (blue curves).

VENT /V-125N



VENT/V-125N		63	125	250	500	1000	2000	4000	8000	LwA
1	INLET	33	42	54	64	67	66	62	49	71
	OUTLET	33	43	61	62	63	62	59	47	69
	BREAK-OUT	20	34	49	45	53	49	50	37	57
2	INLET	34	42	53	64	66	64	58	47	70
	OUTLET	34	43	59	62	62	60	56	45	67
	BREAK-OUT	21	34	48	45	52	47	46	35	55
3	INLET	35	43	53	64	65	61	54	43	69
	OUTLET	35	44	60	62	61	58	53	44	67
	BREAK-OUT	22	35	48	45	51	44	42	31	54
4	INLET	29	38	50	60	63	62	58	45	67
	OUTLET	29	39	57	58	59	58	55	43	65
	BREAK-OUT	16	30	45	41	49	45	46	33	53
5	INLET	30	38	49	60	62	60	54	43	66
	OUTLET	30	39	55	58	58	56	52	41	63
	BREAK-OUT	17	30	44	41	48	43	42	31	51
6	INLET	33	41	51	62	63	59	52	41	67
	OUTLET	33	42	58	60	59	56	51	42	65
	BREAK-OUT	20	33	46	43	49	42	40	29	52
7	INLET	23	32	44	54	57	56	52	39	61
	OUTLET	23	33	51	52	53	52	49	37	58
	BREAK-OUT	10	24	39	35	43	39	40	27	47
8	INLET	24	32	43	54	56	54	48	37	60
	OUTLET	24	33	49	52	52	50	46	35	57
	BREAK-OUT	11	24	38	35	42	37	36	25	46
9	INLET	29	37	47	58	59	55	48	37	63
	OUTLET	29	38	54	56	55	52	47	38	61
	BREAK-OUT	16	29	42	39	45	38	36	25	48

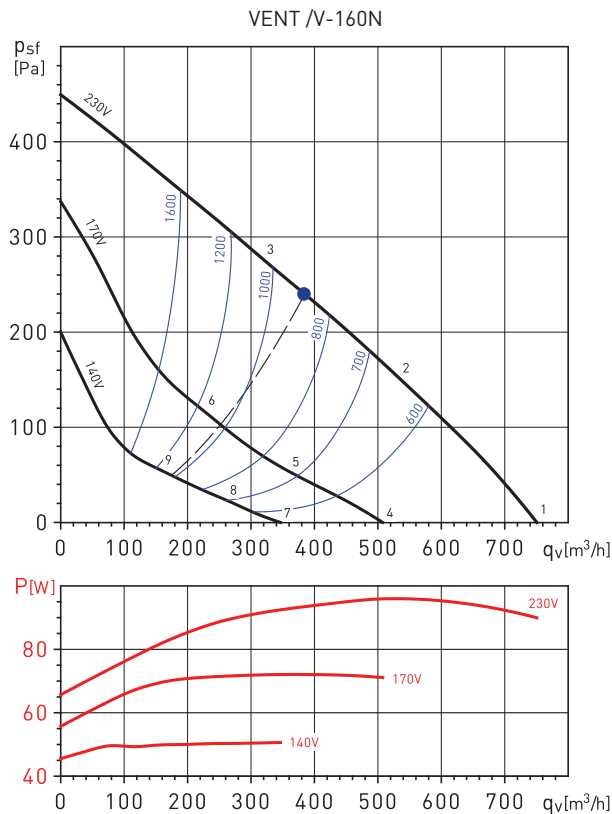
VENT /V-150N



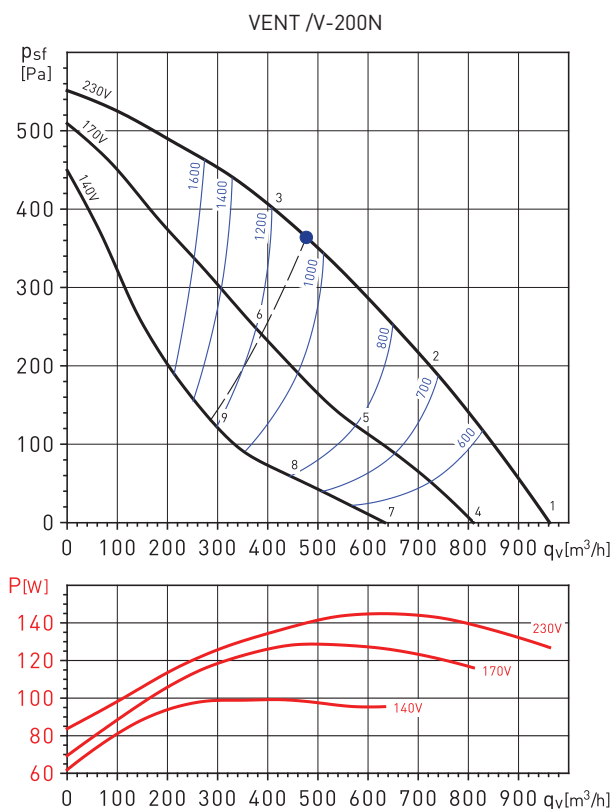
VENT/V-150N		63	125	250	500	1000	2000	4000	8000	LwA
1	INLET	37	45	58	69	68	67	63	51	73
	OUTLET	37	48	62	63	64	64	61	51	70
	BREAK-OUT	21	37	45	49	50	51	49	37	56
2	INLET	35	44	58	68	67	65	60	48	72
	OUTLET	35	47	59	62	63	63	58	48	69
	BREAK-OUT	19	36	45	48	49	49	46	34	55
3	INLET	37	48	60	68	66	65	57	47	72
	OUTLET	36	49	61	61	62	61	55	46	68
	BREAK-OUT	21	40	47	48	48	49	43	33	55
4	INLET	29	37	50	61	60	59	55	43	66
	OUTLET	29	40	54	55	56	56	53	43	62
	BREAK-OUT	13	29	37	41	42	43	41	29	49
5	INLET	26	35	49	59	58	56	51	39	64
	OUTLET	26	38	50	53	54	54	49	39	60
	BREAK-OUT	10	27	36	39	40	40	37	25	46
6	INLET	32	43	55	63	61	60	52	42	67
	OUTLET	31	44	56	56	57	56	50	41	63
	BREAK-OUT	16	35	42	43	43	44	38	28	50
7	INLET	21	29	42	53	52	51	47	35	57
	OUTLET	21	32	46	47	48	48	45	35	54
	BREAK-OUT	5	21	29	33	34	35	33	21	40
8	INLET	18	27	41	51	50	48	43	31	55
	OUTLET	18	30	42	45	46	46	41	31	51
	BREAK-OUT	2	19	28	31	32	32	29	17	38
9	INLET	23	34	46	54	52	51	43	33	58
	OUTLET	23	36	48	48	49	48	42	33	54
	BREAK-OUT	7	26	33	34	34	35	29	19	41

PERFORMANCE CURVES - ACOUSTIC CHARACTERISTICS

- q_v : Airflow in m^3/h .
- p_{sf} : Static pressure in Pa.
- Dry air at 20°C and 760 mmHg.
- Performance data in accordance with ISO 5801 and AMCA 210-99 Standards.
- Sound power level spectrums [LwA].
- SFP: Specific fan power in $W/m^3/s$ (blue curves).



VENT/V-160N		63	125	250	500	1000	2000	4000	8000	LwA
1	INLET	36	45	58	68	67	67	65	53	73
	OUTLET	38	47	61	62	64	64	62	52	70
	BREAK-OUT	22	37	46	50	53	52	50	41	58
2	INLET	33	45	57	68	67	65	61	50	72
	OUTLET	34	47	57	63	63	63	58	49	69
	BREAK-OUT	19	37	45	50	53	50	46	38	57
3	INLET	37	48	58	67	65	64	57	47	71
	OUTLET	37	51	62	63	63	61	55	46	69
	BREAK-OUT	23	40	46	49	51	49	42	35	55
4	INLET	27	36	49	59	58	58	56	44	64
	OUTLET	29	38	52	53	55	55	53	43	61
	BREAK-OUT	13	28	37	41	44	43	41	32	49
5	INLET	22	34	46	57	56	54	50	39	61
	OUTLET	23	36	46	52	52	52	47	38	58
	BREAK-OUT	8	26	34	39	42	39	35	27	46
6	INLET	29	40	50	59	57	56	49	39	63
	OUTLET	29	43	54	55	55	53	47	38	61
	BREAK-OUT	15	32	38	41	43	41	34	27	47
7	INLET	18	27	40	50	49	49	47	35	56
	OUTLET	21	30	44	45	47	47	45	35	52
	BREAK-OUT	4	19	28	32	35	34	32	23	40
8	INLET	15	27	39	50	49	47	43	32	54
	OUTLET	16	29	39	45	45	45	40	31	50
	BREAK-OUT	1	19	27	32	35	32	28	20	38
9	INLET	21	32	42	51	49	48	41	31	55
	OUTLET	21	35	46	47	47	45	39	30	53
	BREAK-OUT	7	24	30	33	35	33	26	19	39

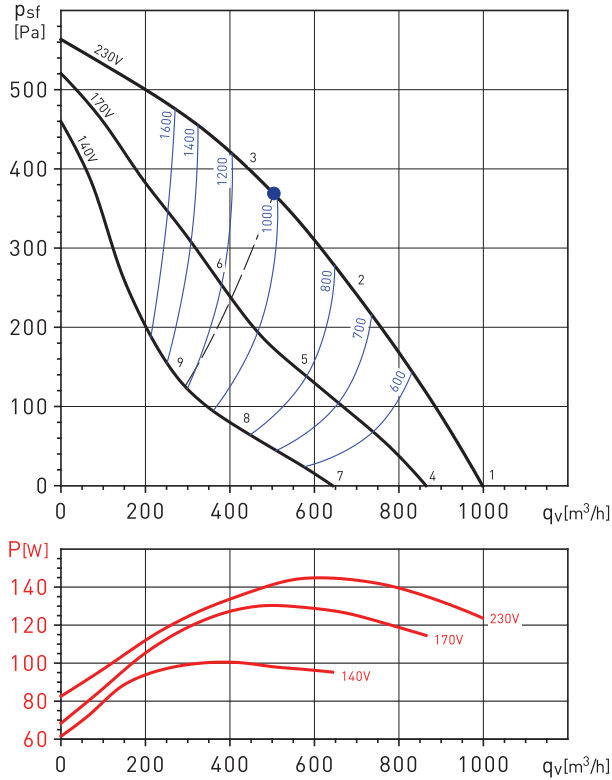


VENT/V-200N		63	125	250	500	1000	2000	4000	8000	LwA
1	INLET	38	48	63	67	70	68	65	63	75
	OUTLET	37	47	61	63	67	67	65	62	73
	BREAK-OUT	36	39	44	38	48	52	54	48	58
2	INLET	36	46	62	64	67	64	61	55	71
	OUTLET	37	46	62	61	63	63	61	54	69
	BREAK-OUT	34	37	43	35	45	48	50	40	54
3	INLET	37	46	60	63	65	62	57	50	69
	OUTLET	35	46	61	59	62	62	58	50	68
	BREAK-OUT	35	37	41	34	43	46	46	35	51
4	INLET	34	44	59	63	66	64	61	59	71
	OUTLET	34	44	58	60	64	64	62	59	69
	BREAK-OUT	32	35	40	34	44	48	50	44	54
5	INLET	31	41	57	59	62	59	56	50	66
	OUTLET	32	41	57	56	58	58	56	49	64
	BREAK-OUT	29	32	38	30	40	43	45	35	49
6	INLET	32	41	55	58	60	57	52	45	65
	OUTLET	30	41	56	54	57	57	53	45	63
	BREAK-OUT	30	32	36	29	38	41	41	30	46
7	INLET	29	39	54	58	61	59	56	54	65
	OUTLET	28	38	52	54	58	58	56	53	64
	BREAK-OUT	27	30	35	29	39	43	45	39	49
8	INLET	24	34	50	52	55	52	49	43	59
	OUTLET	25	34	50	49	51	51	49	42	57
	BREAK-OUT	22	25	31	23	33	36	38	28	42
9	INLET	26	35	49	52	54	51	46	39	58
	OUTLET	24	35	50	48	51	51	47	39	57
	BREAK-OUT	24	26	30	23	32	35	35	24	40

PERFORMANCE CURVES - ACOUSTIC CHARACTERISTICS

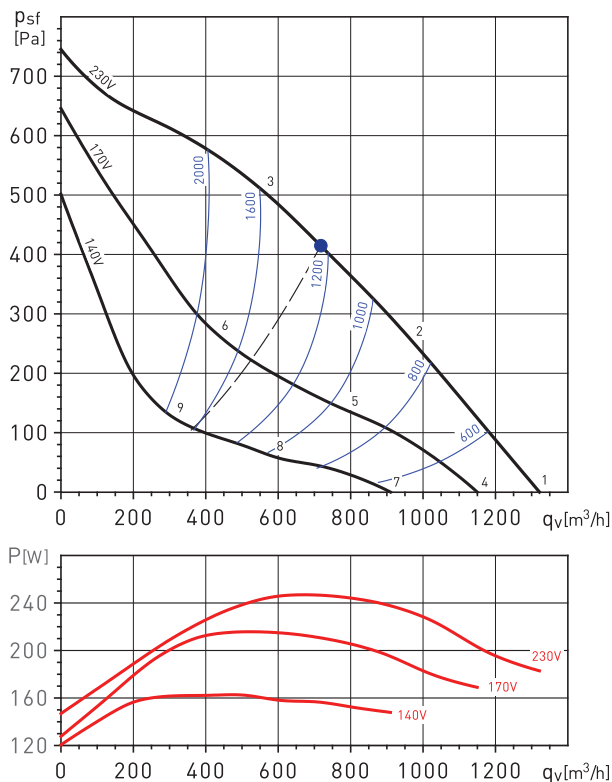
- q_v : Airflow in m^3/h .
- p_{sf} : Static pressure in Pa.
- Dry air at 20°C and 760 mmHg.
- Performance data in accordance with ISO 5801 and AMCA 210-99 Standards.
- Sound power level spectrums (LwA).
- SFP: Specific fan power in $W/m^3/s$ (blue curves).

VENT /V-250N



VENT/V-250N		63	125	250	500	1000	2000	4000	8000	LwA
1	INLET	37	48	65	68	72	70	68	65	77
	OUTLET	40	51	66	67	69	69	66	66	76
	BREAK-OUT	22	39	49	50	58	59	59	56	64
2	INLET	36	46	63	64	68	66	66	59	73
	OUTLET	39	49	63	63	65	64	66	59	72
	BREAK-OUT	21	37	47	46	54	55	57	50	61
3	INLET	35	43	61	61	66	63	62	54	70
	OUTLET	37	46	62	62	65	64	62	55	70
	BREAK-OUT	20	34	45	43	52	52	53	45	58
4	INLET	34	45	62	65	69	67	65	62	73
	OUTLET	37	48	63	64	66	66	66	63	72
	BREAK-OUT	19	36	46	47	55	56	56	53	61
5	INLET	30	40	57	58	62	60	60	53	67
	OUTLET	33	43	57	57	59	58	60	53	66
	BREAK-OUT	15	31	41	40	48	49	51	44	55
6	INLET	30	38	56	56	61	58	57	49	66
	OUTLET	32	41	57	57	60	59	57	50	66
	BREAK-OUT	15	29	40	38	47	47	48	40	53
7	INLET	28	39	56	59	63	61	59	56	67
	OUTLET	31	42	57	58	60	60	60	57	66
	BREAK-OUT	13	30	40	41	49	50	50	47	55
8	INLET	24	34	51	52	56	54	54	47	61
	OUTLET	27	37	51	51	53	52	54	47	59
	BREAK-OUT	9	25	35	34	42	43	45	38	49
9	INLET	24	32	50	50	55	52	51	43	59
	OUTLET	26	35	51	51	54	53	51	44	59
	BREAK-OUT	9	23	34	32	41	41	42	34	47

VENT /V-315N



VENT/V-315N		63	125	250	500	1000	2000	4000	8000	LwA
1	INLET	39	53	67	73	76	71	68	67	79
	OUTLET	48	54	69	71	75	74	70	70	80
	BREAK-OUT	29	33	45	51	58	57	55	54	63
2	INLET	38	55	67	73	73	69	67	63	78
	OUTLET	49	55	70	71	74	72	69	64	79
	BREAK-OUT	28	35	45	51	55	55	54	50	61
3	INLET	42	64	71	73	74	70	67	60	79
	OUTLET	50	64	74	71	74	72	68	62	80
	BREAK-OUT	32	44	49	51	56	56	54	47	61
4	INLET	36	50	64	70	73	68	65	64	77
	OUTLET	45	51	66	68	72	71	67	67	77
	BREAK-OUT	26	30	42	48	55	54	52	51	60
5	INLET	32	49	61	67	67	63	61	57	72
	OUTLET	43	49	64	65	68	66	63	58	73
	BREAK-OUT	22	29	39	45	49	49	48	44	55
6	INLET	35	57	64	66	67	63	60	53	72
	OUTLET	43	57	67	64	67	65	61	55	73
	BREAK-OUT	25	37	42	44	49	49	47	40	55
7	INLET	31	45	59	65	68	63	60	59	72
	OUTLET	40	46	61	63	67	66	62	62	72
	BREAK-OUT	21	25	37	43	50	49	47	46	55
8	INLET	25	42	54	60	60	56	54	50	65
	OUTLET	36	42	57	58	61	59	56	51	66
	BREAK-OUT	15	22	32	38	42	42	41	37	47
9	INLET	28	50	57	59	60	56	53	46	64
	OUTLET	36	50	60	57	60	58	54	48	65
	BREAK-OUT	18	30	35	37	42	42	40	33	47

MOUNTING ACCESSORIES



DEF-VENT
Protection grille.



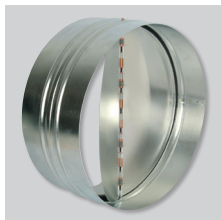
ACOP-VENT
Flexible connectors.



MFL-G4
Filtration box of G4 grade filtration.



SIL
Circular sound attenuators.



CAR
Backdraught shutters.

ELECTRICAL ACCESSORIES



REB
Electronic single phase speed controllers.



RMB
Autotransformer single phase speed controllers.