



OZEO FLAT H



OZEO FLAT H ECOWATT

Whole house extract unit. Low profile and low noise humidity control group, which ensures permanent renewal of air in single dwelling houses or multi-dwelling blocks (individually).

The unit complies with the requirements established in the Technical Building Code.

The system is complimented with humidity controlled air inlets (living room and bedrooms) and with humidity controlled extraction valves in wet areas (bathrooms and kitchen). This system allows improving the energetic performance of the house, reducing the heating consumption and improving the comfort of the user.

Features

- Low profile body (<19cm) of expanded polipropilene (EPP), which confers a very low sound level and a minimum weight (3kg).
- Inlet air: 4 Ø80 mouths, pivoting 90°, and 1 Ø125 mouth
- Outlet air: 1 Ø125 mouth, with adapter for Ø160.
- 4 caps to close unused mouths.
- Fixing system to make easy the mounting in false ceilings.

Versions

- OZEO FLAT H ECOWATT: EC motor, low consumption, with anti-vibration system and regulable speed. Adjustable pressure with potentiometer.
- OZEO FLAT H: AC motor, flat curve.

HORIZONTAL

In false ceiling



On the floor

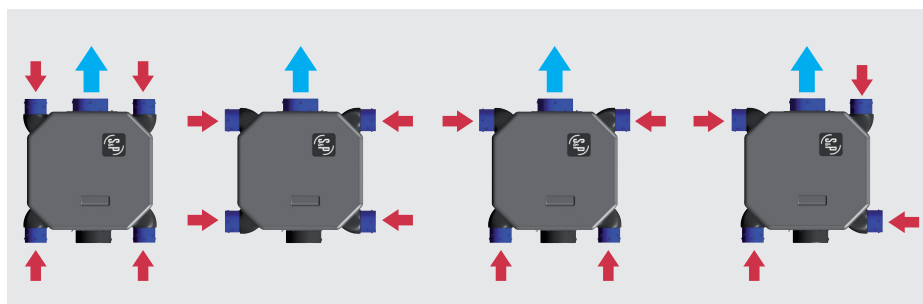


VERTICAL

On the wall



Alternative mounting



Flexibility



Specific applications



Single dwellings VMC



Multi dwelling blocks VMC



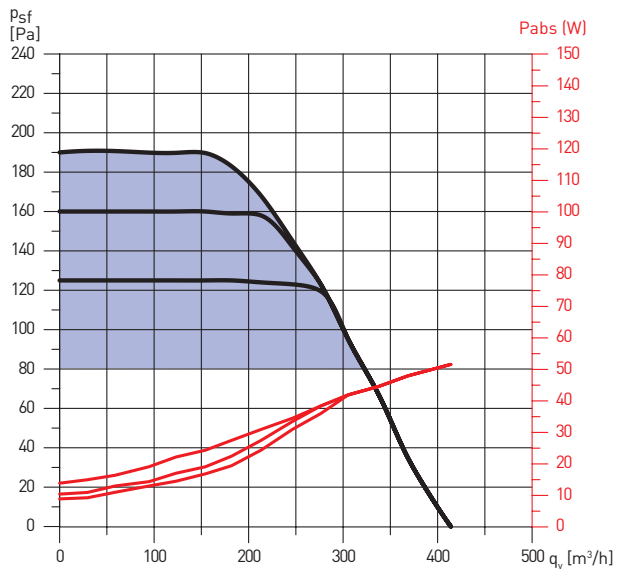
Fixing flanges

TECHNICAL CHARACTERISTICS

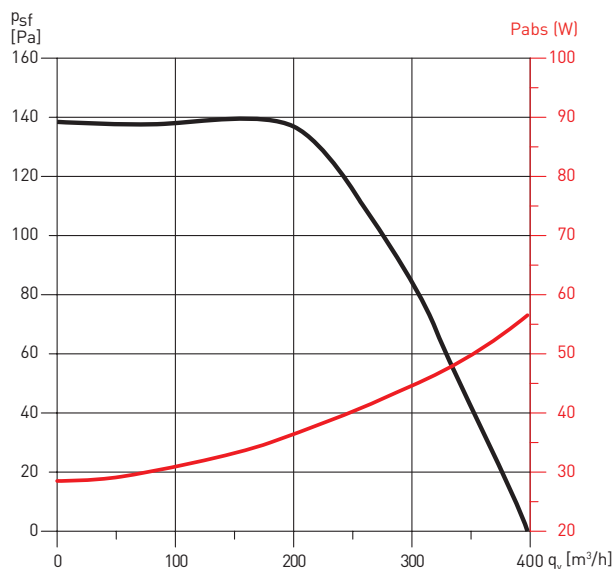
Model	Motor	Voltage (V)	Maximum absorbed power (W)	Medium absorbed power (W)	Maximum absorbed current (A)	Sound pressure radiated Lp(a) at 3m. (dB(A) at 180 m ³ /h and 140 Pa)
OZEO FLAT H ECOWATT	EC	230	54	15	0,4	33
OZEO FLAT H	AC	230	58	35	0,25	34

PERFORMANCE CURVES

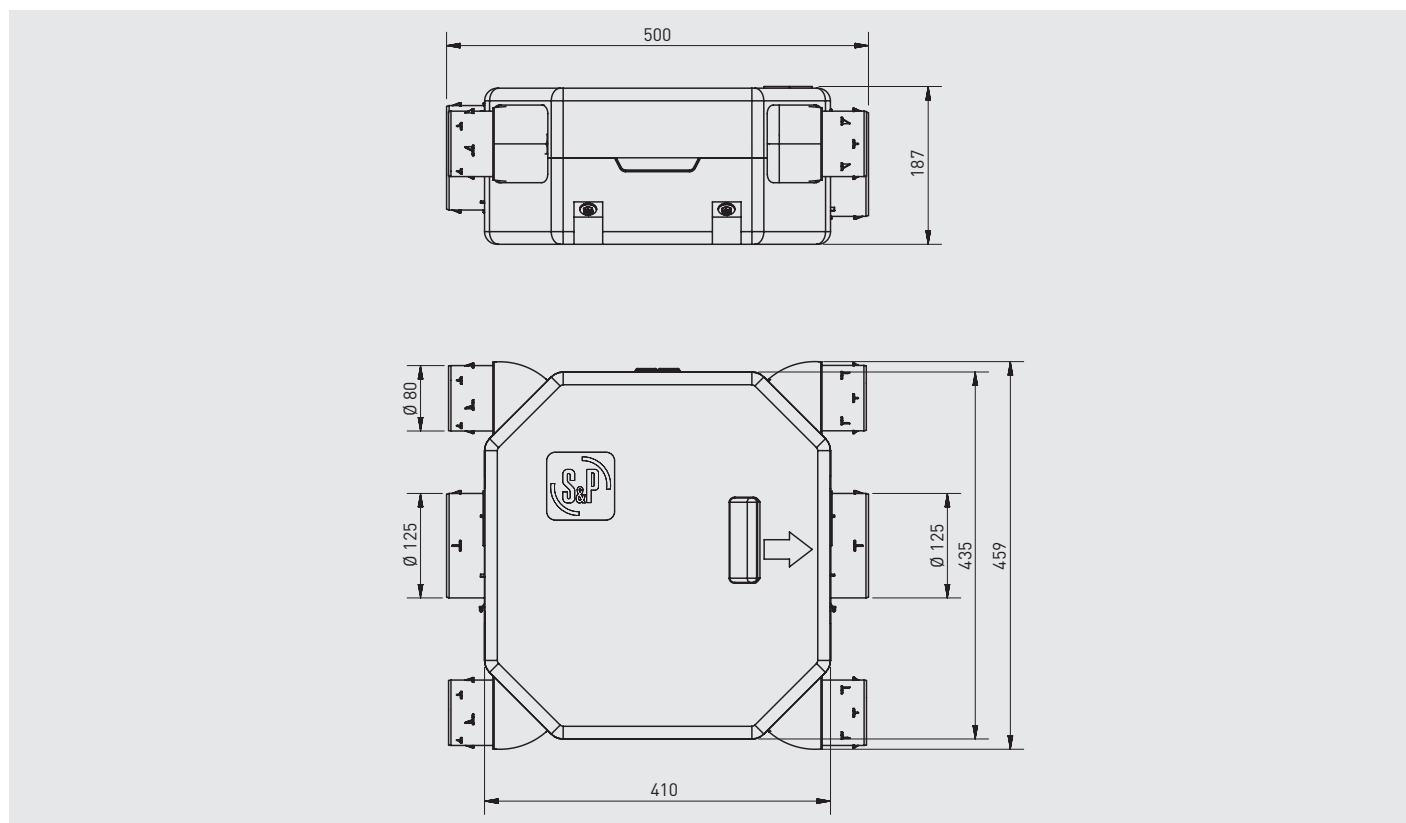
OZEO FLAT H ECOWATT



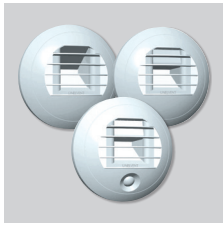
OZEO FLAT H



DIMENSIONS (mm)



ACCESSORIES



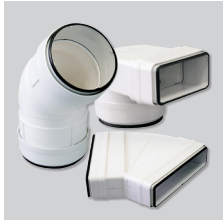
**BEHC
BEHS
BEHW**
Humidity adjustable
exhaust valves.



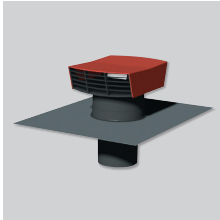
**EC-HY
ECA-HY**
Humidity adjustable
air inlets, standard
(EC-HY) or acoustic
(ECA-HY).



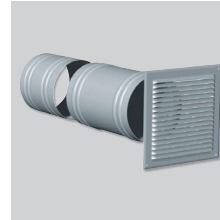
**GP
GPX
GP-PRO
GP-ISO**
PVC ducts.



**TUBPLA V
TUBPLA**
Self-extinguishing
rectangular plastic
ducts.
TUBPLA V series with
gasket.



CT
Roof cap.



PAF
Circular discharge
grille on the wall.



LA
Silencer.



**RED-150 y
ATRF 125/100/80**
Reduction elements
to adapt flexible
ducts.