

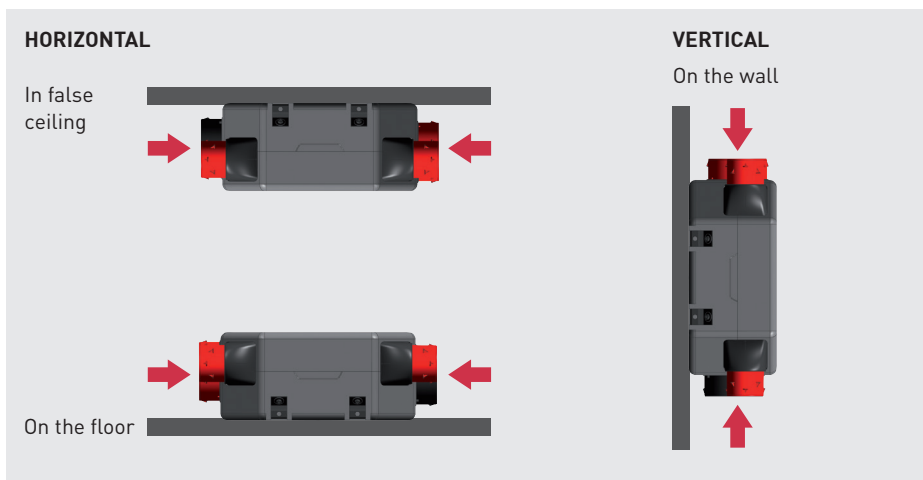


Auto-adjustable whole house extract unit of low-profile and low noise level, that ensures permanent renovation of air in single-dwellings or multi-dwelling blocks.

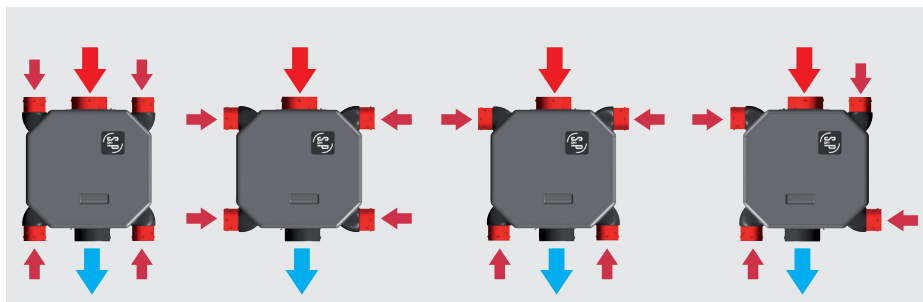
The unit complies with the requirements established by the Technical Building Code. The unit is complemented by two auto-adjustable air inlets in the main rooms (living room and bedrooms) and with auto-adjustable extract valves in wet areas (bathrooms and kitchen).

**Characteristics**

- AC 2-speed motor.
- Low profile body (←19cm) made from expanded polipropilene (EPP), which grants very low noise and slight weight (3kg).
- Inlet: 4 inlets of Ø80, swivelling at 90° and 1 inlet of Ø125.
- Outlet: 1 outlet of Ø125, which includes adapter for Ø160.
- 4 plugs to block the unused inlets.
- Fixing to make easier its mounting in false ceilings.



Alternative mounting



Flexibility



**Specific applications**



VMC  
Single  
dwellings

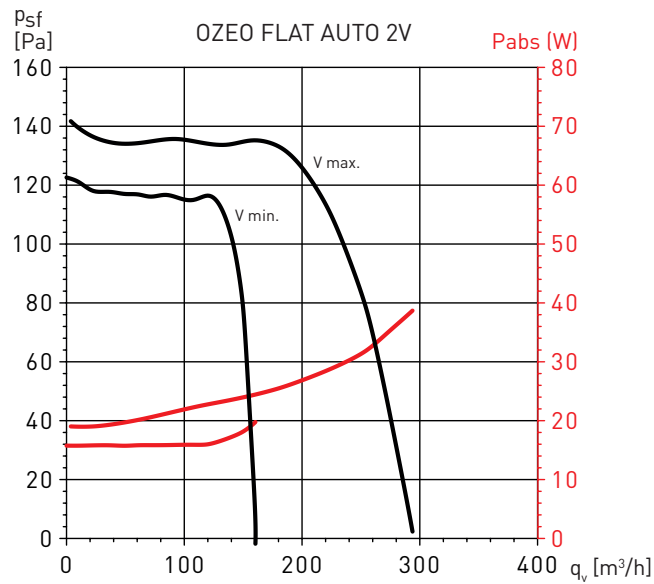


VMC  
Multi  
dwelling  
blocks

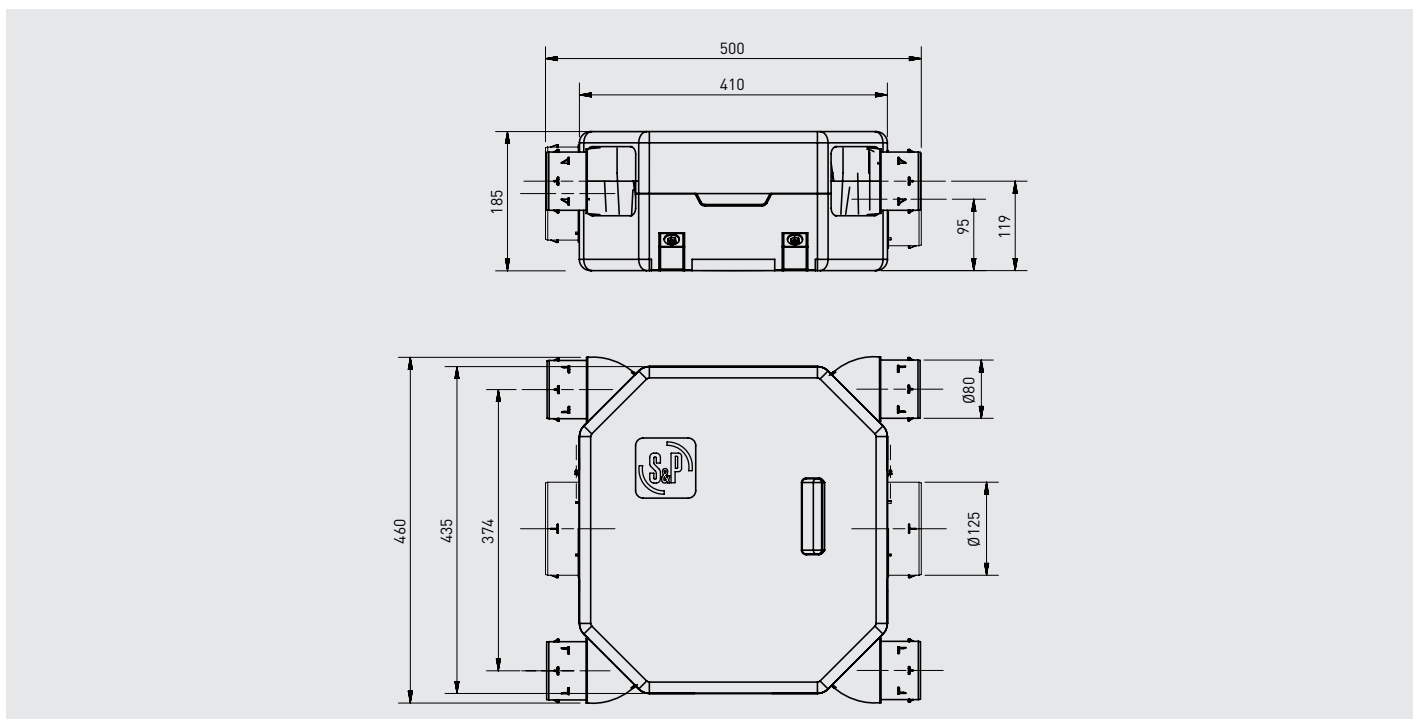
**TECHNICAL CHARACTERISTICS**

Model	Motor	Voltage (V)	Maximum absorbed power (W)		Medium absorbed power (W)		Maximum absorbed current (A)		Sound pressure radiated Lp (dB(A)) at 120 m³/h	
			V max.	V min.	V max.	V min.	V max.	V min.	V max.	V min.
OZEO FLAT AUTO 2V	AC	230	39	19	22	15	0,2	0,12	27	25

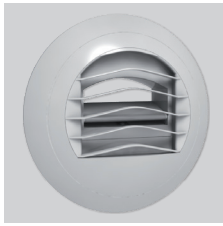
**PERFORMANCE CURVES**



**DIMENSIONS (mm)**



**ACCESSORIES**



**BARJ  
BARP**  
Outlet auto-adjustable valves.



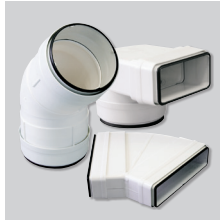
**BDOP**  
Inlet and outlet valves.



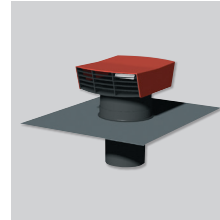
**EC-N  
ECA**  
Auto-adjustable air inlets, standard (EC-N) or acoustic (ECA)



**GP  
GPX  
GP-PRO  
GP-ISO**  
PVC ducts.



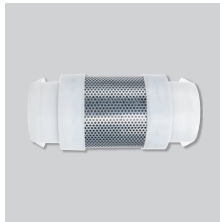
**TUBPLA V  
TUBPLA**  
Self-extinguishing rectangular plastic ducts. TUBPLA V series with gasket.



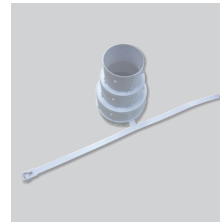
**CT**  
Roof cap.



**PAF**  
Circular discharge grille on the wall.



**LA**  
Silencer.



**RED-150P y  
ATRF 125/100/80**  
Reduction elements to adapt flexible ducts.



**FLEXIREC**  
Semi-flexible oblong ducts.

**FLEXICIR**  
Semi-flexible circular ducts.